

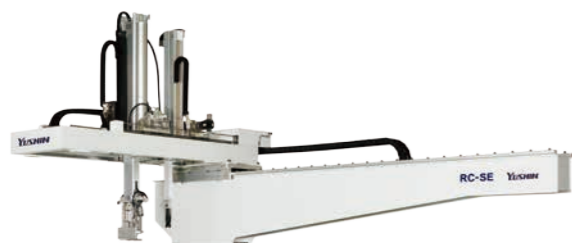
1 All-Axis Servo Driven Type Take-Out Robot

RC2-100130S/D-SE

Separate catalog available

RC2-100130S/D-SE

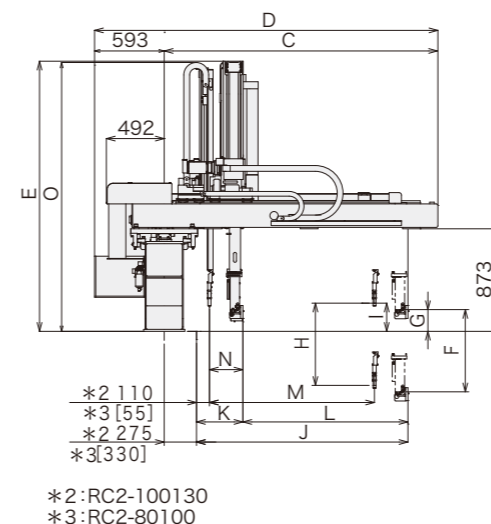
Offering speed, reliability and energy savings with a wide range of scalable functions



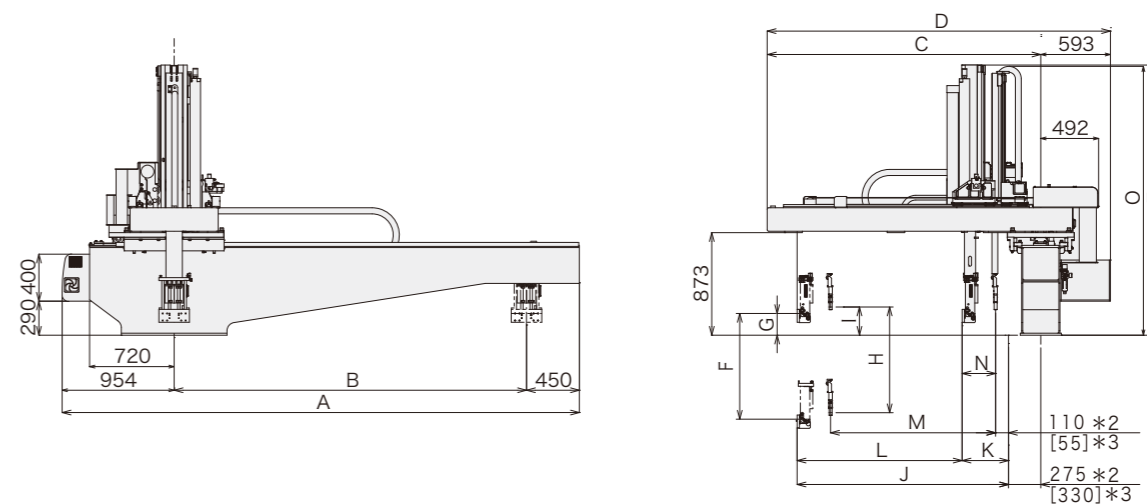
For CE supported languages, please contact our sales department.

- Clamping force 1000 - 1300 tf
- Vibration control
- Power-saving
- Low posture (Double speed mechanism)
- All-axis servo-driven

■ Rear (Non-operator) Side Discharge Direction [mm]



■ Operator Side Discharge Direction [mm]



Developed to achieve "high-speed, high-rigidity," "downtime reduction," and "running cost reduction."

- Compressed air economizing tool Smart ECO Vacuum
Yushin has refined our unique ECO Vacuum technology to reduce compressed air consumption even further. Smart ECO Vacuum monitors vacuum pressure continuously to optimize suction timing. As a result, robot air consumption can be economized by as much as 78%, which can lead to lower electricity costs for air compressors and reduced capital expenditures.
- Productivity improvement
Faster, more accurate high-speed take-out with standard machines
High-rigidity vertical and kick units ensure fast, accurate operations.
- E-touch II
Equipped with easy-to-use E-touch II controller with 10.4-inch display for intuitive operation.

■ Standard Specifications

Power supply	Drive method	Controller model	Working air pressure	Flip angle
3-phase 200 VAC/220 VAC (50/60 Hz)	Digital servo motor 3/5-axis	E-touch II	0.49 MPa	90°

Model	Power consumption	Traverse stroke [mm]	Kick stroke [mm]		Vertical stroke [mm]		Air consumption [NL/cycle]	Payload [kg]	Noise [dBA]	Target IMM clamp capacity [tf]
			Main arm	Sub arm	Main arm	Sub arm				
RC2-100130S-SE	2.7 kVA 3-phase 200 VAC 7.6 A	3000 (3500) (4500)	1575	—	1800 (2100) (2500)	—	63.1 Smart ECO Vacuum OFF	35 (50)	77.4	1000 1300
RC2-100130D-SE	3.6 kVA 3-phase 200 VAC 10.4 A		1405	1405	1800 (2100) (2500)	1800 (2100) (2500)	45.2 Smart ECO Vacuum ON			

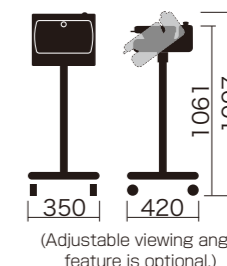
S type : Robot is equipped with main arm only. D type : Robot is equipped with main arm and sub arm.
() : Modified stroke () : Increased maximum payload
Payload includes the end-of-arm tool.
Traverse beam stanchion is standard equipment for traverse stroke over 3500 mm.

[mm]

Model	A	B	C	D	E	F	G	H	I
RC2-100130S-SE	4404 (4904) (5904)	3000 (3500) (4500)	2330	2923	(2175) 2300 (2450) (2650)	(1550) 1800 (2100) (2500)	185	—	—
RC2-100130D-SE								(1550) 1800 (2100) (2500)	240

Model	J	K	L	M	N	O
RC2-100130S-SE	1800	225	1575	—	—	—
RC2-100130D-SE		395	1405	1405	285	2147 (2265) (2453) (2613)

■ Controller [mm]



() : Modified stroke

RC2-100130S/D-SE

All-Axis Servo Driven Type Take-Out Robot